



ISSPCON
JABALPUR
6th-9th FEBRUARY 2025



39th Annual National Conference of
**Indian Society For
Study Of Pain**

06th – 09th February, 2025 | Jabalpur, Madhya Pradesh

Venue:

ITC Welcome, Jabalpur, Madhya Pradesh

Organized by:

Jabalpur City Branch

Hosted by:

MP State Chapter of ISSP

isspcon2025.com

Welcome



Dear Friends,

Greetings from Jabalpur,

It is a matter of great pride and honour for the Jabalpur Chapter of ISSP for Jabalpur being chosen as the venue for the 39th ISSPCON Conference to be held from 7th to 9th February 2025, with a pre-conference workshop to be organized on 6th February 2025. The Jabalpur Chapter of ISSP is enlivened and hopped up to host you.

During the course of 39th ISSPCON Conference, 2025, it shall be our endeavor to ensure that you are provided with a platform to familiarize with the national and international standards of Pain practices prevailing globally in this promising and ever-evolving discipline of pain medicine. Keeping this intention at heart, it was decided that “Way to go to achieve global pain standards”, shall be the central theme at the 39th ISSPCON Conference, 2025.

The Scientific Program shall be updated in advance, by June, 2024, which shall enable delegates to share their queries and doubts with respect to the topics at isspcon25@gmail.com. The selected speakers at 39th ISSPCON Conference, 2025, shall be addressing the august gathering with the sole objective to clear the doubts raised by our participants on email. The pre – conference workshop shall be graced by the presence of National & Inter National established and successful practitioners of pain medicine who have earned an impeccable professional reputation amongst peers and the society at large. Such practitioners shall guide all participants on how to deal with complex and difficult pain procedures while also providing inputs on how to procure the most suitable equipments at affordable prices.

Jabalpur was chosen as the venue for the 39th ISSPCON Conference for its rich and diverse heritage and history. Fondly called as the “Sanskaardhaani”, Jabalpur is blessed to be thriving and growing on the banks of holy river Narmada, which holds religious and historical significance in the hearts of all residents of Jabalpur. From Bhedaghat to the Balancing Rock, Jabalpur offers several tourist attractions that provide you with a lifetime of memories to cherish. The boating experience at Bhedaghat and the cruise at Bargi Dam deserve a special mention for nature lovers. Jabalpur is also the focal point for wildlife enthusiasts, who find comfort in Jabalpur being surrounded by several National Parks like Kanha, Bandhavgarh, Panna, Pench and Satpura, to name a few, which inhabit the beautiful and famous Indian tigers. Jabalpur is also known for its food which offers various popular street food dishes, especially, ‘khove ki jalebi’.

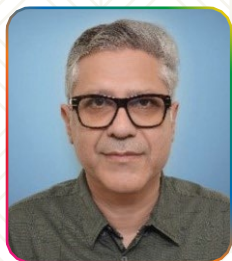
We would also like to take this opportunity to remind our participants that they shall be showered with the same warmth and hospitality which they were met with during the Silver Jubilee Pain Conference in 2010.

Warm regards
Team ISSPCON, 2025

Organising Committee

Dr Sunita Lawange

ISSP President



Dr Ashish Sethi

Organising Chairman



Dr Ravindra Harne

Organising Secretary & Treasurer

Dr Pravesh Kanthed

Hon. Secretary



Dr Mayank Chansoria

Organizing Co-Chairman



Dr Sunny Bhasin

Joint Organizing Secretary



Dr Neelima Chincholikar

Scientific Chairman

PATRONS

Dr Gautam Das

Dr Pratibha Manche

Dr Kailash Kothari

Dr Shiraj Munshi

Dr Madhuri Lokapur

Dr Muralidhar Joshi

Dr Neeraj Jain

Dr Meenu Chadda



CONFERENCE HIGHLIGHTS

Expert Panel Discussions	Eminent Faculty
Orations	Credit Points
Free Paper/Poster Presentations	Exhibition
Pre-Conference Workshop	



KEY DATES

Last Date for Early Bird Registration	31 st March 2024
Last Date for Regular Registration	31 st December 2024
Abstract Submission Open	01 st September 2024
Last Date for Abstract Submission	15 th December 2024
Pre-Conference Workshop	06 th February 2025
Conference	07 th – 09 th February 2025

ABSTRACT TIMELINES

Abstract Submission Opens	01 st September 2024
Last Date for Submission of Abstract	15 th December 2024
Acceptance Notification	15 th January 2025

ABSTRACT THEME

Way to go to achieve Global Pain Standards

ABSTRACT GUIDELINES

- The Scientific Committee of the Jabalpur Society for Study of Pain welcomes the submission of abstracts for free communication - oral and e-poster presentations.
- Each author can present one abstract only (oral presentation or poster).
- Abstracts submitted should preferably be original research work.
- Abstracts already published or presented at previous conferences should not be submitted.
- Abstracts may be submitted for oral/poster presentation (committee decision is final).
- The time allocated for each oral presentation will be 6 minutes. There will be 2 additional minutes for questions and discussions.
- The time allocated for each Poster presentation will be 3 minutes. There will be 2 additional minutes for questions and discussions.
- Title Font size > 12
- Author's Font size 11, presenting Author's name first.
- Font style: Arial, Calibri, Verdana, Times New Roman, or Helvetica
- Text to be typewritten in black ink using font size 10, single space, number of words not to exceed 250.
- Abstracts submitted to other international/ national meetings must not be submitted.

RULES FOR SUBMISSION OF ABSTRACTS

- Abstracts must be submitted via this website. Faxed or emailed abstracts will not be considered.
- Conference registration number should be mentioned at the time of submission.
- REGISTRATION IS MANDATORY FOR ABSTRACT SUBMISSION

PLEASE READ THE SUBMISSION RULES BEFORE SUBMITTING AN ABSTRACT.

- The presenting author is required to ensure that all co-authors are aware of the content of the abstract before submission.
- The presenting author must be listed as the first author.
- Abstracts previously presented will not be accepted.
- All abstracts should be submitted and presented in clear English with accurate grammar and spelling. Please submit symbols as words.
- All abstracts accepted for presentation will be published on the Conference website prior to the Conference.
- Please note the submitting author will receive all correspondence about the abstract so we advise that the submitting author details that are entered are the same details as those of the presenting author.
- Abstracts may not be edited/updated after final submission. You are welcome to bring an updated abstract onsite with you.
- Your abstract is not successfully submitted until you receive a confirmation e-mail after clicking the final submit button. If you do not receive a confirmation e-mail, please contact us at isspcon2025@gmail.com

GUIDELINES FOR SUBMISSION

Before you begin, please prepare the following information:

- Presenting author's contact details (should be the same details as the submitting author so that the presenting author receives the correspondence about the abstract)
 - o Email address
 - o Full postal address
 - o Daytime and evening phone number
- Author and co-authors' details
 - o Full first and family name(s)
 - o Affiliation details: department, institution/hospital, city, state (if relevant), country
- Abstract title - limited to 20 words in UPPER CASE
- Abstract text – limited to 250 words

(Please Note: Word count is affected when graphs/tables/images are added)

Abstract layout - Abstracts must be submitted with the following sections:

- o Introduction
- o AIMS / Objectives
- o Methods
- o Results
- o Discussion
- o Conclusions
- o References
- **Introduction:** Mention the need for study, aims & objectives, lacunae in existing literature.
- **Methods:** Mention type and design of study, study location and population, ethics clearance, clinical trial registration number if any, inclusion and exclusion criteria, blinding, randomization, sample size estimation, methodology proper with parameters studied and statistical details
- **Results:** Details of demographics, primary and secondary outcome measures, safety profile details, using suitable illustrations.
- **Discussion:** Include inferences from results (not repetition of values), confounding variables, comparison with previous literature, limitations and future scope.
- **Conclusion:** To be precise and focused on the primary aim of the study. (Do not mention limitations, future scope In or after the conclusion slide).
- References are not obligatory and word count is affected by the inclusion of references.
- **Tables** – A maximum of 3 tables of up to 10 rows x 10 columns can be included per abstract.
- **Graphs and images** – It is important to note that each image included in the abstract is worth 30 words. A maximum of 3 images can be included per abstract. The maximum file size of each graph/image is 500 KB. The maximum pixel size of the graph/image is 600(w) x 800(h) pixels. You may upload graphs in JPG format only.
- **Draft abstracts** – The submission form allows you to store your abstract as a draft in order to make changes. Please note that abstracts must be SUBMITTED before the deadline in order to be sent to review for inclusion in the Scientific Program.

ABSTRACT SUBMITTERS DECLARATION

- During abstract submission, you will be asked to declare the following:
- I confirm that I previewed this abstract, and that all information is correct. I accept that the content of this abstract cannot be modified or corrected after final submission, and I am aware that it will be published as submitted.
- Submission of the abstract constitutes the consent of all authors to publication (e.g., Conference website, programs, other promotions, etc.)
- The Abstract Submitter grants the Organizers a copyright license to reproduce, publish, translate, distribute, and display the text of the Content on a royalty-free, perpetual, irrevocable nonexclusive basis.
- I herewith confirm that the contact details saved in this system are those of the presenting author, who will be notified about the status of the abstract. The presenting author is responsible for informing the other authors about the status of the abstract.

- I understand that the presenting author must be a registered participant.
- The Organizers reserve the right to remove from publication and/or presentation an abstract that does not comply with the above.
- I understand that I must select a specific Theme, mentioned on the Jabalpur Society for Study of Pain website. Although the committee will work hard to honor this selection, this cannot be guaranteed. The Committee reserves the right to change the Theme, under which the abstract was originally submitted.

CONFLICT OF INTEREST & ETHICAL APPROVAL

The abstract submitter must attach an approval letter from HOD / Superintendent declaring that it was not submitted previously in any conference and there is no conflict of interest in the presentation.

ABSTRACT SELECTION AND PRESENTATION

The Committee will review all submitted abstracts. Notification regarding abstract acceptance and scheduling will be sent to the submitting author.

Please note, if your abstract is accepted for oral presentation, the presenting author will be permitted to present in the program.

GUIDELINES FOR EPOSTER PRESENTATION

- The E-poster will be displayed on a standard 42" LCD.
- File format should be PowerPoint (.PPT/.PPTX)
- QR Codes may be included
- Stipulated time for the EPoster presentation is 3 min + 2 min Discussion.
- Total size of the presentation should not exceed 5 MB.
- Only 1 slide per poster.
- Animation/movies/sounds will not be supported; please submit in a static required template format only
- Images and tables: at least 200 dpi. Good picture quality is essential.
- When saving your PPT please do not use symbols or special characters (ie. +/@/ü) in the file name
- Please note that 6 (SIX) best Eposters would be awarded podium presentation, so you should be ready with a PPT presentation of 8 min + 2 min discussion
- The selected poster will be a podium presentation on the last day

Design Specifications

- The E-poster needs to be created as per the given format.
- Presenter Name, Poster title & number should be placed in a title placeholder.
- Case study presentation must include Introduction, Aim & Objectives, Background, Case, Conclusion/ Clinical Relevance.
- Case report presentation must include Introduction, Aim & Objectives, Materials & Methods, Results, Conclusion.
- The poster should be self-explanatory. The text should be brief and well-organized.

Colour Specifications:

- When using light backgrounds (white, yellow, light blue) we suggest using dark fonts (black, navy blue, dark green).
- When using dark backgrounds (blue, purple) we suggest using light fonts (white, yellow, cyan).
- Avoid using red or green in any fonts or backgrounds as they are colours that are difficult to read.
- Illustrations/images/photographs used in the E-poster should be enlarged enough to show relevant details.

Note: The Committee reserves the right to: Select e-posters relevant to the scientific program. Decide on the final form of presentation (Oral or E- Poster)

GUIDELINES FOR ORAL PRESENTATION

- Only research articles or case series will be accepted for oral presentation.
- The slides should include headings as follows:
- Stipulated time for the oral presentation is 6 min + 2 min Discussion.
- Use of personal laptops is NOT allowed
- Format of the presentation should be MS PowerPoint (.pptx - 2010 or later) or Mac Keynote 6.x or later - font size to be between 20-24 and readable
- Videos should be in mp4/mov format for Mac and WMV format for Windows if included
- Kindly send your abstract as per the guidelines.

Registration Information

CATEGORY	REGULAR REGISTRATION 31 ST DECEMBER 2024
ISSP Member	₹ 17600
Non-Member	₹ 18200
Accompanying Person	₹ 17600
PG Student	₹ 13200
Foreign Delegate	\$ 350

Note: The registration fee includes GST 18%

PAYMENT MODE: Cheque / DD in favour of “Jabalpur Society for Study of Pain”

Dated:..... Drawn on:..... Amount:.....

In words:.....

Other mode of Payments - NEFT/ RTGS..... Dated:..... Amount:.....

BANK DETAILS

Account Name: **Jabalpur Society for Study of Pain**

Account Number: **7682748379**

Bank Name: **Indian Bank**

IFSC Code: **IDIB000W513**

Bank Address: **Jabalpur**

REGISTRATION FEE INCLUDES

Delegate

- Admission to Scientific Sessions and Exhibition
- Refreshments During Breaks
- Lunch & Dinner
- Registration Materials and Kit

Accompanying person

- Refreshments During Break * Lunch

Cancellation And Refund Policy

- No Refund will be given for cancellation requests received after 30th September 2024
- All cancellation requests must be sent to the conference secretariat in writing by email only.
- Cancellation requests for any paid registration **MUST BE** received by the Conference Secretariat through email to be entitled to a refund.
- **REFUND** for cancellation of a paid registration in case the cancellation request is received on or before 30th April 2024 after deducting the administrative charges and cost towards refund, if any.
- **NO REFUND** for cancellation of a paid registration in case the cancellation request is received through email after 30th September 2024.
- Refunds, if any will be processed post-conference within 20 days.
- A similar mode of transfer will be adopted for a refund as the fund has been received. **NO CASH** refund policy.

Host City – Jabalpur

Jabalpur (formerly Jubbulpore) is a tier 2 city situated on the banks of the holy Narmada River in Madhya Pradesh, India. According to the 2011 census, it is the third-largest urban agglomeration in Madhya Pradesh and the country's 37th-largest urban agglomeration. Jabalpur is an important Administrative, Industrial, and Business centre of Madhya Pradesh. It is a major education hub in India. The Madhya Pradesh High Court and other important Administrative Headquarters of India.

Jabalpur is the administrative headquarters of Jabalpur district (the second-most-populous district in Madhya Pradesh) and the Jabalpur division. The city is known for the marble rocks on the river Narmada at Bhedaghat. Jabalpur is one of the most populated cities in the state, located at a major road and rail junction. The city is a military headquarters, containing the central gun-carriage factory, an ordnance factory, and an ammunition depot.

It is known from archaeological evidence that a highly sophisticated urbanized culture—the Indus civilization—dominated the north-western part of the subcontinent from about 2600 to 2000 BCE. From that period on, India functioned as a virtually self-contained political and cultural arena, which gave rise to a distinctive tradition that was associated primarily with Hinduism, the roots of which can largely be traced to the Indus civilization.



Places to visit in host city



Dhuandhar Falls

The Dhuandhar Falls are located on Narmada River in Bhedaghat and are 30 meters high. The Narmada River, making its way through the world-famous Marble Rocks, narrows down and then plunges in a waterfall known as Dhuandhaar. The plunge, which creates a bouncing mass of mist, is so powerful that its roar is heard from a far distance.



Marble Rocks

The Marble Rocks is an area along the Narmada river in central India near the city of Jabalpur; in Bhedaghat of Jabalpur District, in the state of Madhya Pradesh. The river has carved the soft marble, creating a beautiful gorge of about 8 km in length. It is a popular Indian tourist destination.



Balancing Rocks

Balancing Rocks in Jabalpur, Madhya Pradesh, is a sheer geological marvel in the true sense. Located on the way to the Madan Mahal Fort, which was built by Raja Madan Singh, a Gond ruler, Balancing Rocks is a rocky formation of uneven rocks, which is said to be created by volcanic eruptions thousands of years ago.



Kachnar City Shiva Temple

The Kachnar City is well known for the tourist attraction and religious destination for the locals and the people from abroad because of the tallest statue of Lord Shiva which was built in the year 2004 and was made available for the public, tourists and the devotees from 15 February 2006. These 12 Lingam has been collected from various shrines of Lord Shiva throughout the country.



Dumna Nature Reserve

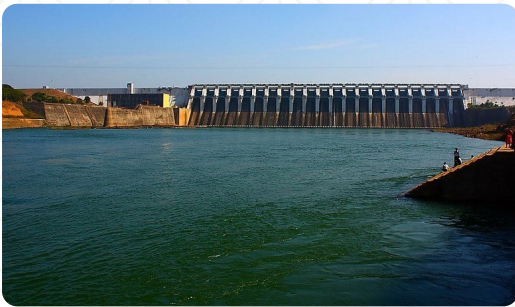
The Dumna Nature Reserve of Jabalpur Municipal Corporation is spread over nearly 1800 acres of forested land on a plateau, about 40 meters above Jabalpur town. It was transferred to the Municipal Committee of Jubbulpore by the provincial government to act as the catchment area for the Khandari lake.

Places to visit in host city



Bandhavgarh National Park

Bandhavgarh National Park is a national park of India, located in the Umaria district of Madhya Pradesh. Bandhavgarh, with an area of 105 square kilometres (41 sq mi), was declared a national park in 1968 and then became Tiger Reserve in 1993. The current core area is spread over 716 square kilometres (276 sq mi).



Bargi Dam

Bargi Dam is one of the first completed dams out of the chain of 30 major dams to be constructed on Narmada River in Madhya Pradesh, India. Two major irrigation projects, named Bargi Diversion Project and Rani Avantibai Lodhi Sagar Project, have been developed by the Bargi Dam administration.

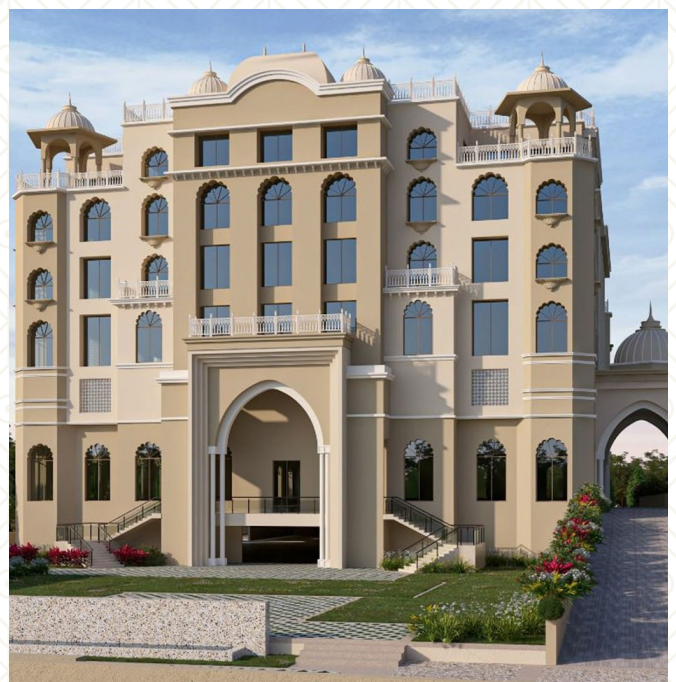


Kanha National Park

Kanha National Park is nestled in the Maikal range of Satpuras in Madhya Pradesh, the heart of India that forms the central Indian highlands. The national park is being popularized as the Tiger reserve and interestingly is being declared as one of the finest wildlife areas in the world. Spreading across two revenue districts the Mandala and the Kalaghat, Kanha National Park was declared a reserve forest in 1879 and revalued as a wildlife sanctuary in 1933.

Venue: ITC Welcome, Jabalpur, Madhya Pradesh

Welcomhotel Jabalpur will offer 124 rooms, more than 15,000 sq. ft. of banquet space along with two restaurants, a swimming pool, a spa and a fitness centre. Located at Sagra, the property is just 6 km away from the popular tourist spot Bhedaghat, while also being accessible to the IT Park (1.5 km), Jabalpur Junction Station (11 km) and Jabalpur Airport (24 km).



How to reach Jabalpur



By Air

Nearest Airport is in Jabalpur called as Dumna Airport which is just 20 KMs away. Jabalpur is well connected from Mumbai, Delhi, Pune, Nagpur, Bhopal and Indore through air route.



By Rail

Nearest Railway station is Jabalpur Railway Station. It is an important station of West Central Railway. The DRM and General Manager Office is situated at Jabalpur. Jabalpur is well connected from various major cities of the country through Rail route.



By Road

Jabalpur is well connected through Road network. National Highway-7 passes through Jabalpur.



Conference Secretariat

Dr Ashish Sethi

Organizing Chairman

Dr Mayank Chansoria

Organizing Co-Chairman

Dr Ravindra Harne

Organising Secretary & Treasurer

Handphone: + 91 98261 66423

Gmail: isspcon2025@gmail.com

Website: isspcon2025.com

Professional Conference Organiser

Meety Events Private Limited

1-8-343, M.N.J Place, IAL Colony, Begumpet,
Secunderabad – 500 003.

Mr Thirupati Atkapuram

Project Director

Handphone: + 91 98484 40272

Email: thirupati.atkapuram@meetyevents.com

Ms Prashanthi Erra

Project Manager

Handphone: + 91 7997765680

Email: prashanthi.erra@meetyevents.com